

Use System Restore

After you've decided to use System Restore to revert your system to a previous state, start the System Restore Wizard and follow the prompts. To use the System Restore Wizard, make sure you're logged on as an administrator, and then follow these steps:

1. Click **Start**, point to **All Programs**, point to **Accessories**, point to **System Tools**, and then click **System Restore**.
2. On the Welcome screen, click **Restore my computer to an earlier time**, and then click **Next**.
3. On the **Select a Restore Point** page, select the date from the calendar that shows the point you'd like to restore to, as shown in Figure 2, and then click **Next**.

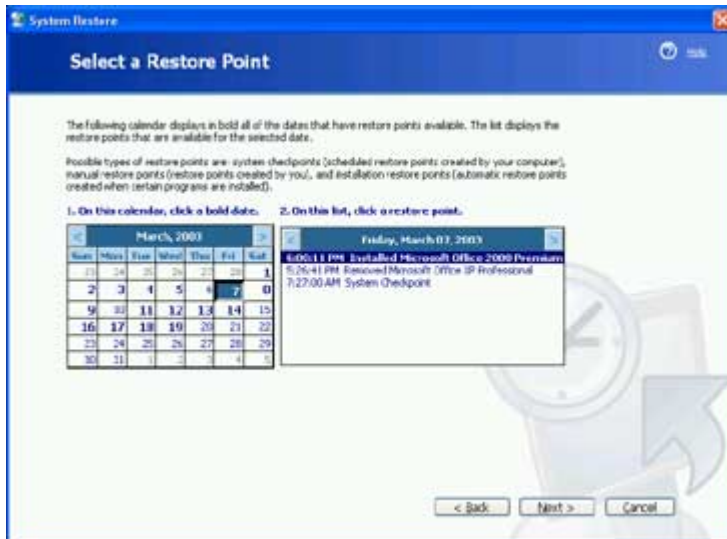


Figure 2

4. On the **Confirm Restore Point Selection** page, verify that the correct restore point is chosen, and then close any open programs.
5. Click **Next** if you are ready to proceed or click **Back** to change the restore point.
6. The computer will shut down automatically and reboot. On reboot, you'll see the **Restoration Complete** page, and then click **OK**.