

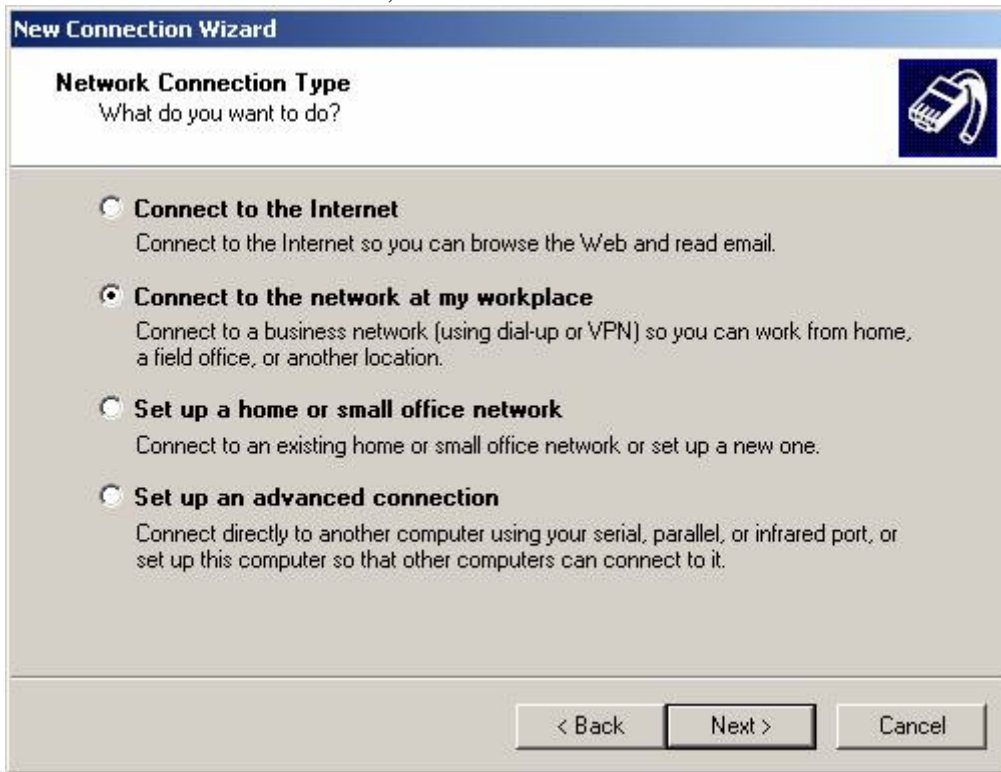
1. In Control Panel, double click Network Connections



2. Click Create a new connection in the Network Tasks task pad



3. In the Network Connection Wizard, click

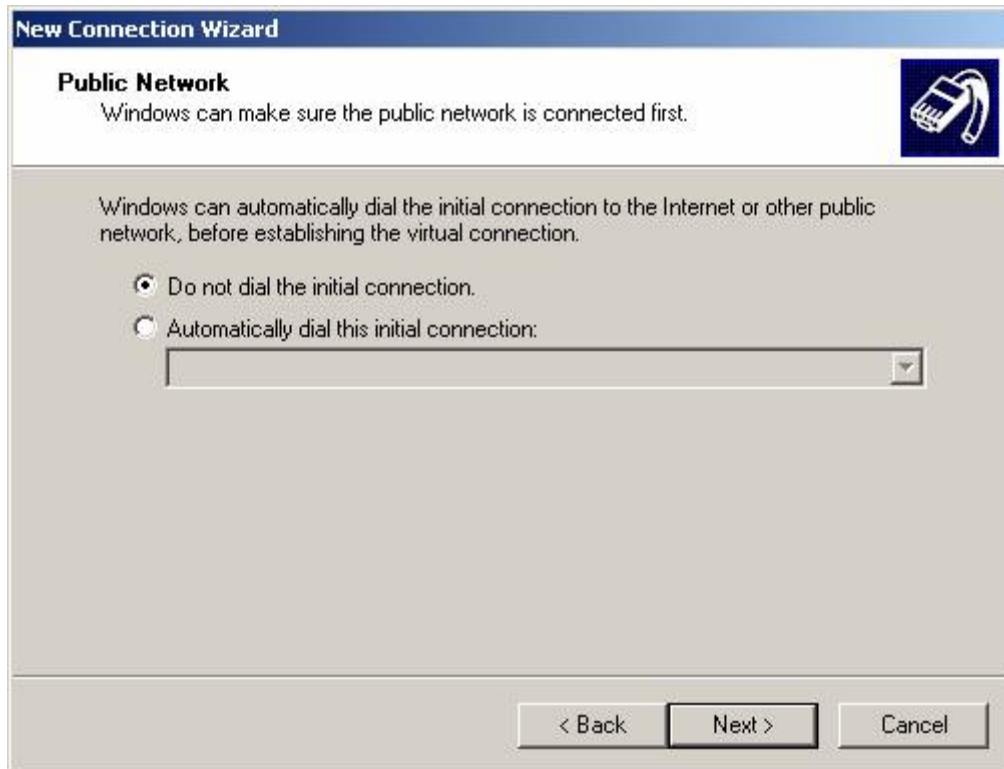


Next.

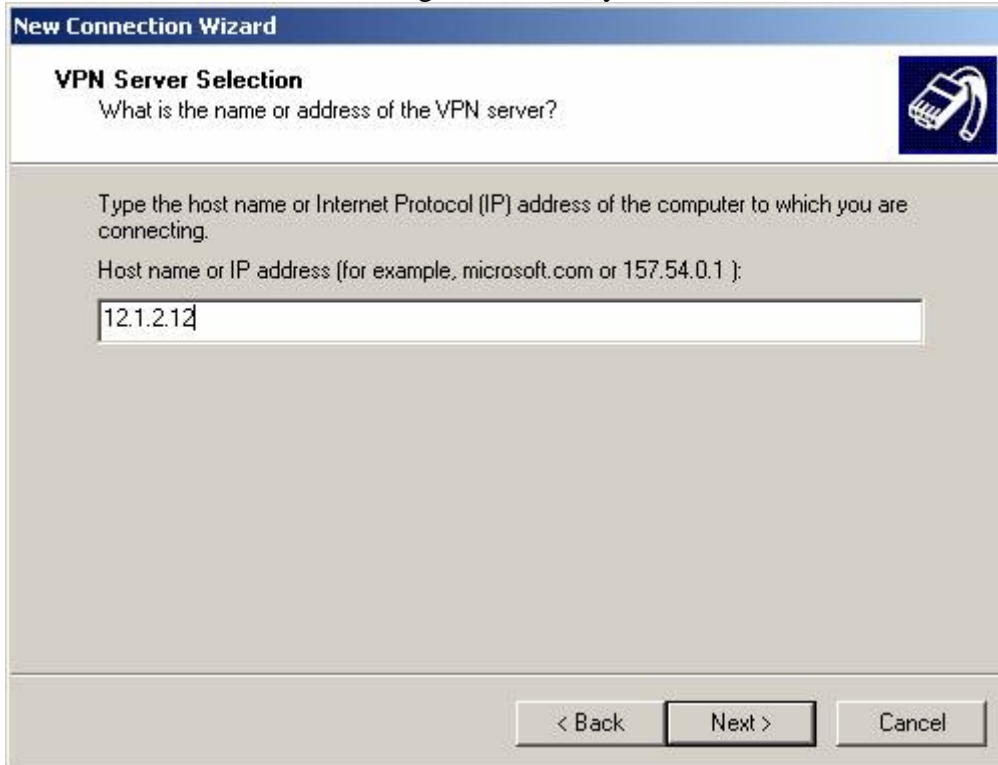
4. Click **Connect to the network at my workplace**, and then click **Next**.



5. Click Virtual Private Network connection, and then click Next.
6. If you are prompted, you need to select whether you will use a dialup connection or if you have a dedicated connection to the Internet either via Cable, DSL, T1, Satellite, etc. Click Next.



7. Type a host name, IP or any other description you would like to appear in the Network Connections area. You can change this later if you want. Click Next.



**New Connection Wizard**

**VPN Server Selection**  
What is the name or address of the VPN server?

Type the host name or Internet Protocol (IP) address of the computer to which you are connecting.

Host name or IP address (for example, microsoft.com or 157.54.0.1):

< Back   Next >   Cancel

8. Type the host name or the Internet Protocol (IP) address of the computer that you want to connect to, and then click Next.
9. You may be asked if you want to use a Smart Card or not.



**New Connection Wizard**

**Smart Cards**  
You can use your smart card with this connection.

You can configure this connection to use your smart card to log you into the remote network. Select whether to use your smart card with this connection.

Use my smart card

Do not use my smart card

< Back   Next >   Cancel

10. You are just about done, the rest of the screens just verify your connection, click Next.